

Approved Document M: 2004 'Access to and use of buildings' and BS 8300: 2001 'Design of buildings and their approaches to meet the needs of disabled people' both aspire to a more inclusive building design approach to accommodate the needs of all people.

Clients

- A) Office of the Deputy Prime Minister.
- B) British Standards Institution.

The Projects

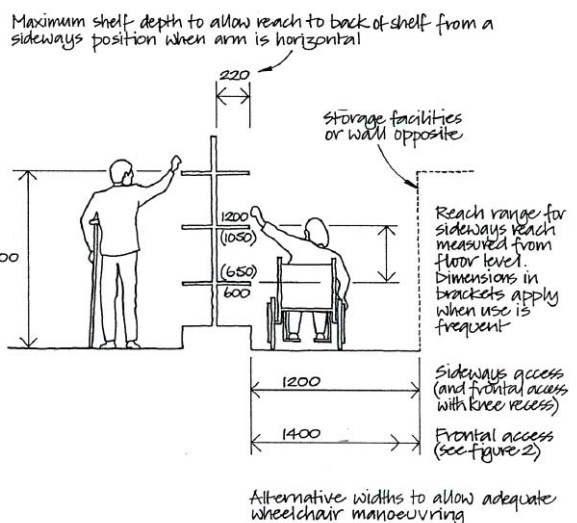
Approved Document M, replacing the 1999 edition entitled 'Access and facilities for disabled people', required new texts and illustrations.

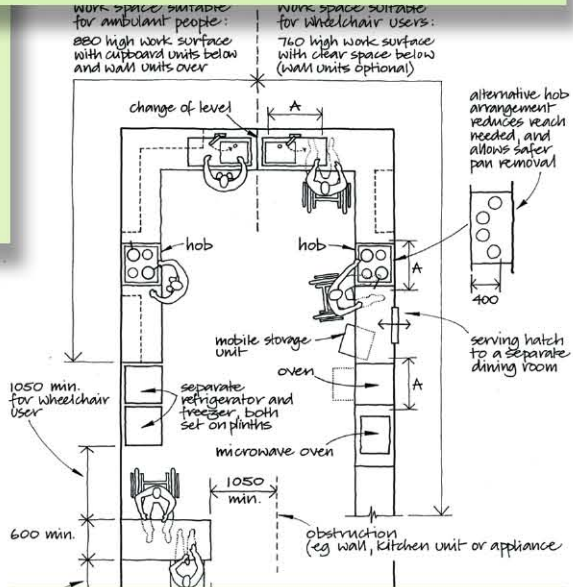
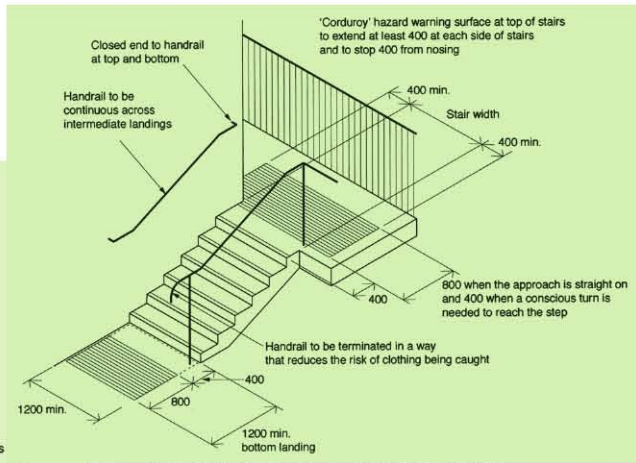
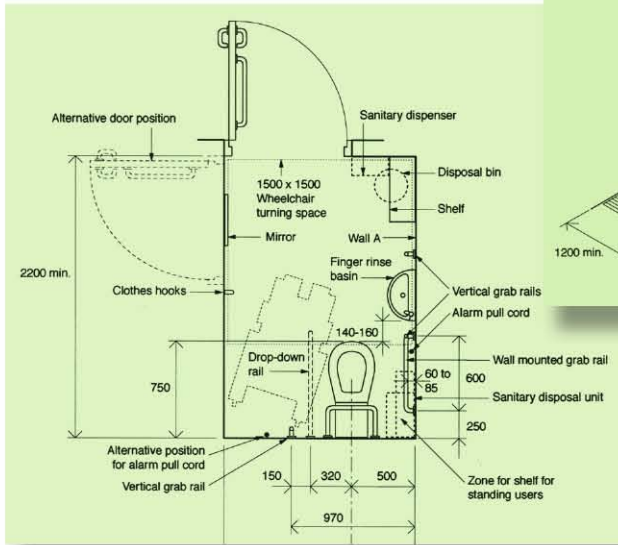
BS 8300, replacing BS 5619 and BS 5810, required new texts and illustrations based on highly detailed, government-funded ergonomic research and NBAT architects' own professional experience.

Once completed, BS 8300 served as the springboard for the development of Approved Document M.

Objectives

To provide clear guidelines for designers to ensure access to buildings is inclusive for people of all levels of mobility.





Work undertaken (AD Part M)

- Key consultative partner in development committee.
- Writing and editing texts for the 'requirements'.
- Technical diagrams.

Work undertaken (BS 8300)

- Key contributor to BSI sub-committee.
- Close liaison with provider of government-funded ergonomic research.
- Technical diagrams based on the ergonomic research (mostly hand-drawn).
- Writing and editing.

Feedback

Both documents well received by the working committees, the many outside contributors and, during an extended consultation period, those invited to comment on the proposals.

